

DESIGN CONSIDERATIONS

Sustainability / Redundancy of Systems: Emergency Generator Enclosures



DESIGN CONSIDERATIONS

Sustainability / Redundancy of Systems: Water Systems

- Storage of water within protected environment
- Easily stored bladder can also be used
- A separate, redundant, water supply system
- Emergency water treatment chemicals on-site



DESIGN CONSIDERATIONS

Sustainability / Redundancy of Systems: Power Systems



- Emergency generators within protected environment
- Provide redundant generators in the event of equipment failure
- Provide replacement hookup capability

DESIGN CONSIDERATIONS

Sustainability / Redundancy of Systems: Fuel Storage

- Protected double walled tanks
- Secured environment
- Accessible for air drop of fuel



DESIGN CONSIDERATIONS

Sustainability / Redundancy of Systems: Communications Tower

- Appropriate grounding
- Sufficient distance from building in the event of collapse: fall-down zone
- Harden the building to resist tower collapse
- Provide back-up capability



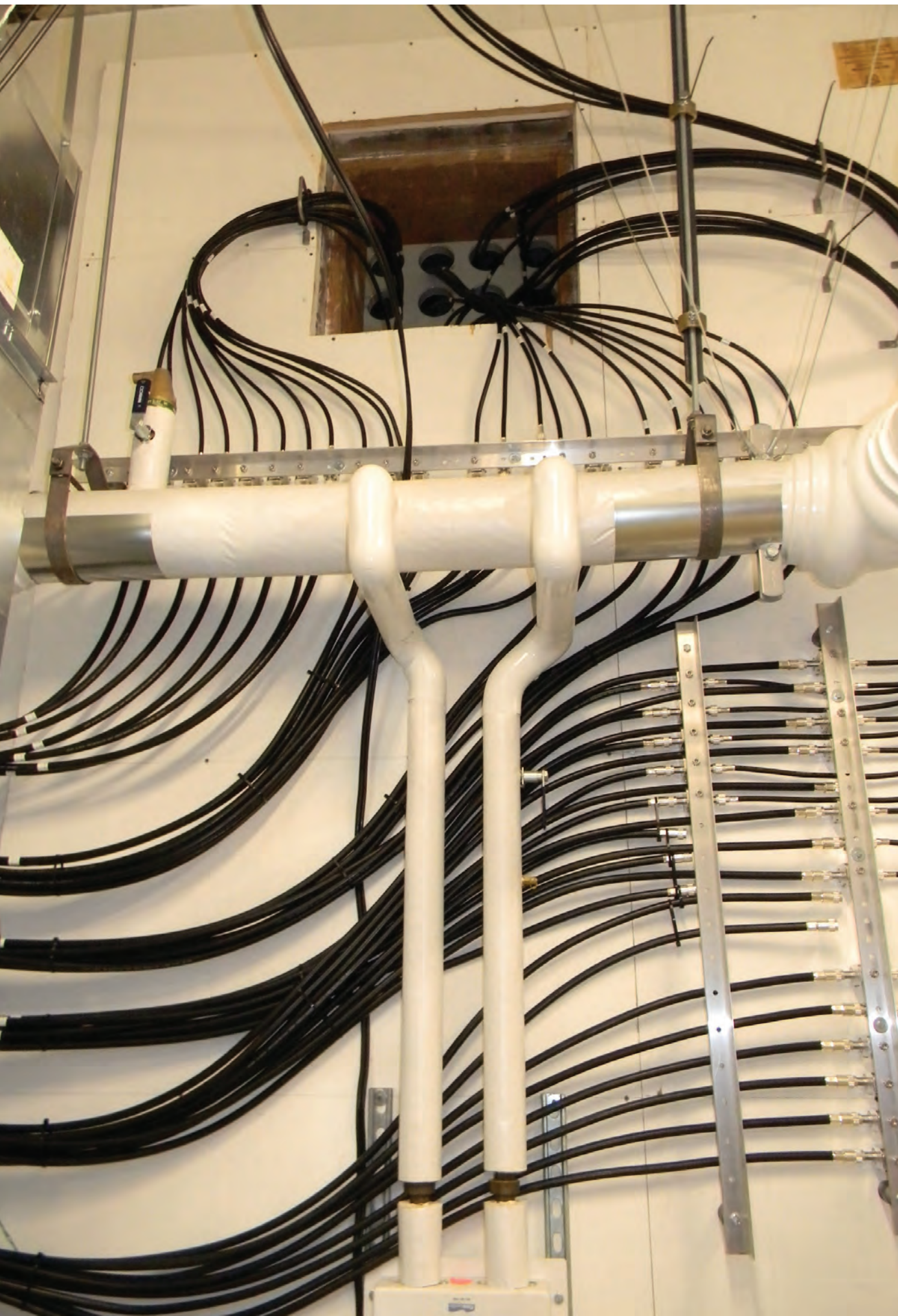
DESIGN CONSIDERATIONS

Sustainability / Redundancy of Systems: Fixed and Deployable (Secondary) Communication Towers



DESIGN CONSIDERATIONS

Sustainability / Redundancy of Systems: Antennae Mountings



DESIGN CONSIDERATIONS

Sustainability / Redundancy of Systems: Special “Tie Downs”



Fuel Tanks



Communication Tower

DESIGN CONSIDERATIONS

Sustainability / Redundancy of Systems: Press Equipment Connections



- Press video feeds located at exterior
- Keep cables and equipment out of the facility
- Locate in proximity to large vehicle parking
- Provide electrical power service



DESIGN CONSIDERATIONS

Space Need Considerations: Plan for Activation Accommodation

•Type

•Location

•Quantity



DESIGN CONSIDERATIONS

Space Need Considerations: Staff Break and Food Prep Areas



DESIGN CONSIDERATIONS

Space Need Considerations: Staff Break and Food Prep Areas

- Break areas
- Food service capability
- Food storage is important
- Food delivery capability
- Provide for trash



DESIGN CONSIDERATIONS

Space Need Considerations: Staff Break and Food Prep Areas

“...one of our primary problems became that of trash and garbage. We had no place to store it and eventually had to use spaces that we needed, such as offices...”

Bob Lay

Emergency Management Director (Retired)
Brevard County



DESIGN CONSIDERATIONS

Space Need Considerations: Multi-Use Space

- Multiple use capability increases funding opportunities
- Incorporate capabilities for emerging technology
- Fixed arrangements limit flexibility – not an efficient model for a dedicated Incident Command Center



DESIGN CONSIDERATIONS



Model 1:
The training / theater space



Model 2:
The classroom



Model 3:
The marketplace approach

DESIGN CONSIDERATIONS

Space Need Considerations: Press Equipment Connections



Press Briefing Area

- Outside of security zone
- No interference with Incident Command Center

Citizens Information Area



- Citizen's information area
- Volunteer call center
- Provide excess capability for technology
- Sound control critical

DESIGN CONSIDERATIONS

Space Need Considerations: Create a Secure & Inviting Public Access Entry



DESIGN CONSIDERATIONS

Space Need Considerations: Emergency Operations Centers - VERY Specialized Facilities



Greene County EOC



Osceola County Joint 911 & EOC



Clay County EOC



Hernando County EOC



Okeechobee EOC



Charleston County EOC / 911

CASE STUDY

Okeechobee County, Florida



CASE STUDY

Okeechobee County, Florida



CASE STUDY

Floor Plan Example No.2: Okeechobee County, Florida EOC and Comm. Center



CASE STUDY

Greene County, Missouri



CASE STUDY

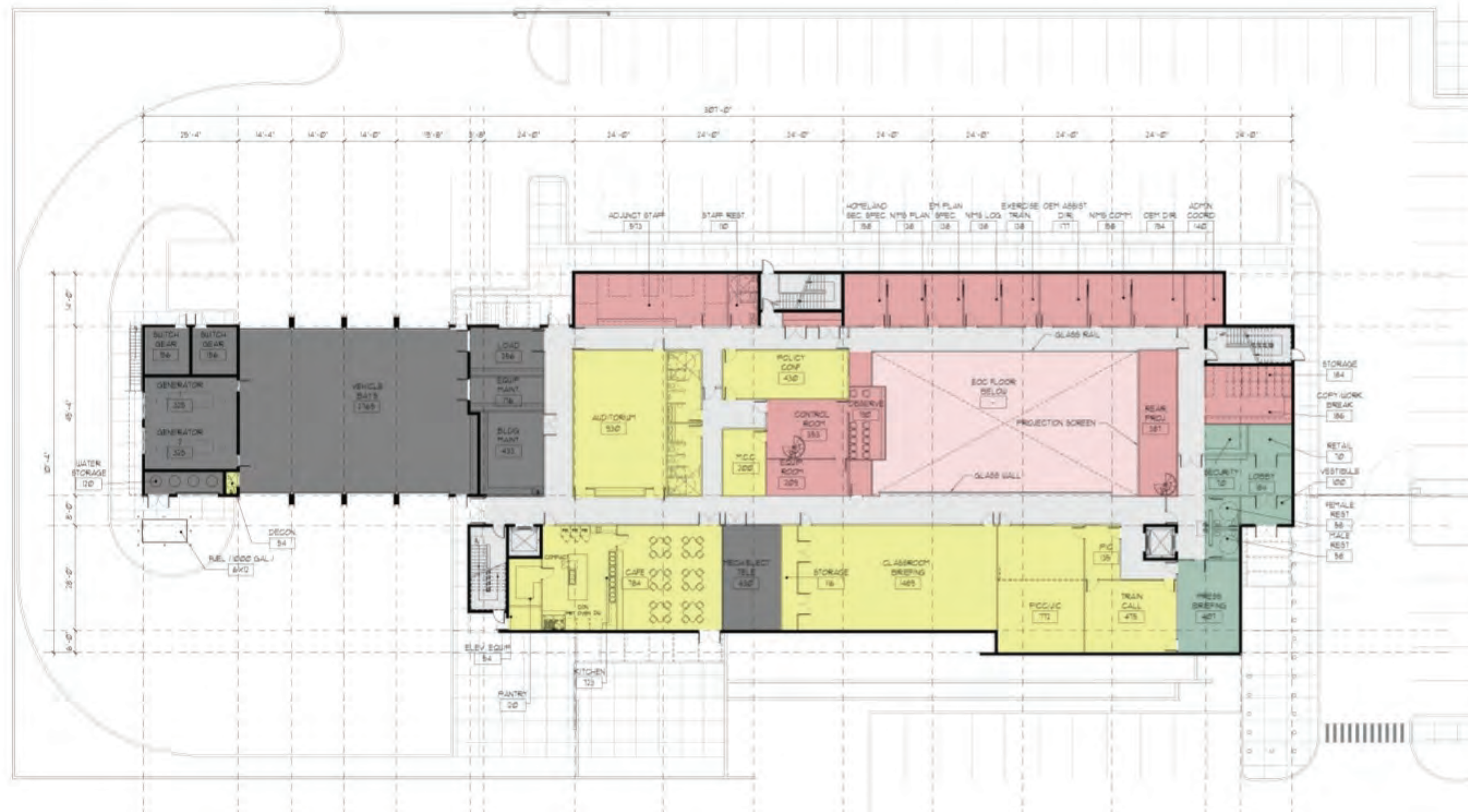
Greene County, Missouri



CASE STUDY

Floor Plan Example No.3: Greene County, MO Public Safety Coordination Center

[research + planning = design]



- CIRCULATION
- PUBLIC ACCESS
- EMERGENCY COMMUNICATIONS CENTER
- OFFICE OF EMERGENCY MANAGEMENT AND EOC
- MULTI-USE FACILITIES
- FACILITY FUNCTION

GROUND FLOOR PROGRAM

21569 GSF

DESIGN CONSIDERATIONS

Technology & Emerging Trends



- Multiplicity of potential events
- Video surveillance
- Volunteer participation
- Social media
- Specialized areas
- Consolidation / co-sitting of critical facilities

DESIGN CONSIDERATIONS

Technology & Emerging Trends: Video Surveillance



DESIGN CONSIDERATIONS

Technology & Emerging Trends

Utilizing Social Networks

- Facebook
- Twitter
- Instagram

Utilizing Social Networking

- Immediate dangers
- Weather alerts and emergencies
- Post disaster information
- Special events
- Emergency plans

Impact on 911 System



DESIGN CONSIDERATIONS

Technology & Emerging Trends: Volunteer Participation



- Staffing public access areas
- Staffing records departments
- Public reporting apps
- Special events
- Access to secured areas:
 - Break rooms
 - Lockers
 - Restrooms
 - Meeting spaces

DESIGN CONSIDERATIONS

Technology & Emerging Trends: Consolidation / Co-site Public Safety Facilities Suitable for Consolidation

- Emergency Operations Centers
- 911 / Dispatch Facilities
- Law Enforcement
- Fire Administration / Fire Rescue
- Fusion Centers
- SCIF's
- Information Technology
- Traffic Management
- Training Facilities





Ian Reeves, AIA, IALEP
President
Architects Design Group



Susan Gantt, AIA
Senior Vice President
Architects Design Group



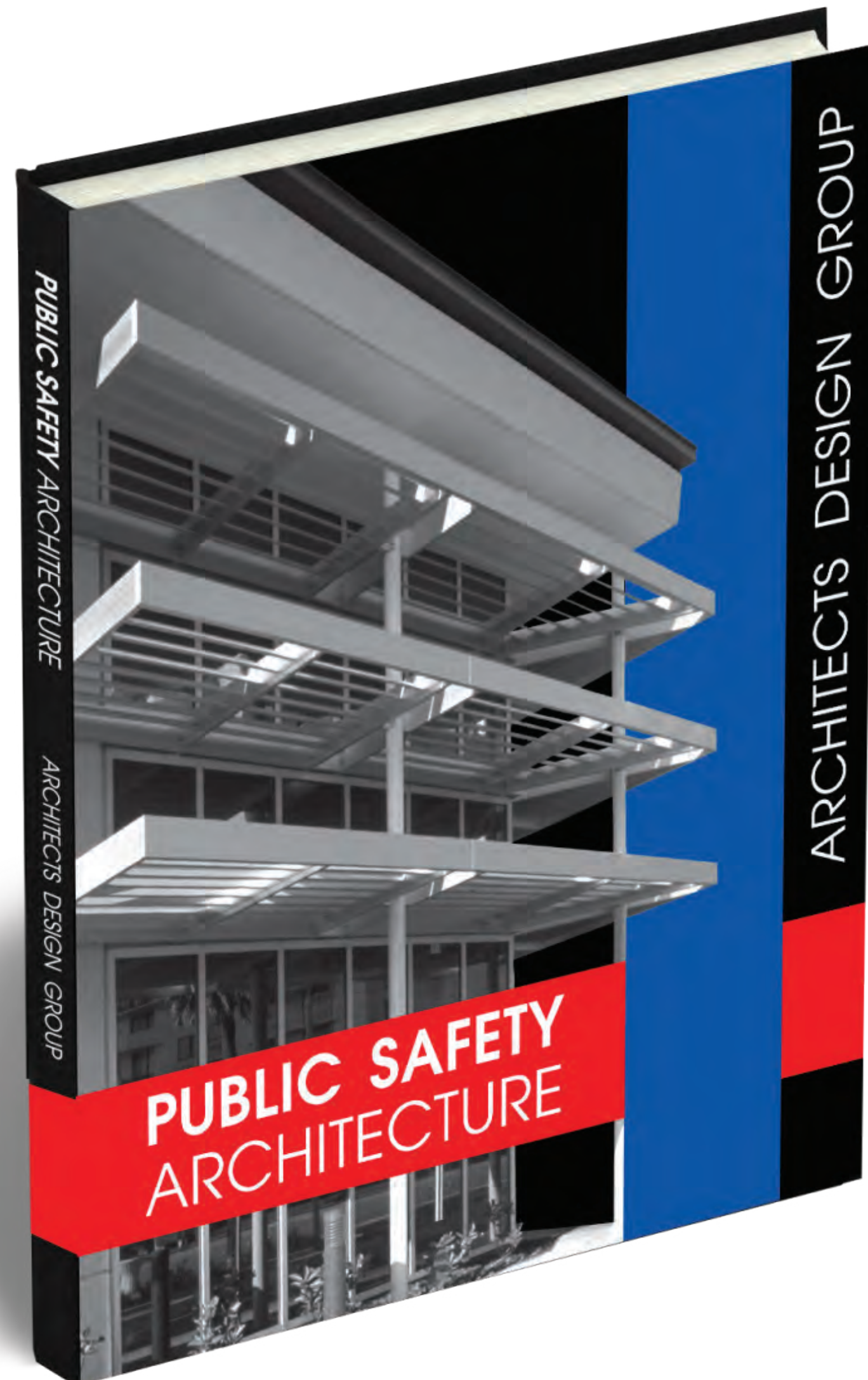
Telephone: 407-647-1706

Fax: 407-645-5525

E-Mail: adg@adgusa.org


Website: www.adgusa.org

PUBLIC SAFETY ARCHITECTURE



ABC's of EOC

Ian Reeves and Susan Gantt



50 YEARS Architects Design Group

Comment Questionnaire

How would you rate our speaker? (Please circle)

1 2 3 4 5 6 7 8 9 10

Poor Excellent

What interested you most about the information presented?

How can we improve our presentation?

Would you like us to send you more information on this topic?

Name _____

Email _____

Agency _____

Phone _____

www.adgusa.org | (407) 647.1706 | marketing@adgusa.org

Complete the comment card for a chance to win a FREE copy of the Public Safety Architecture book.

VISIT US IN BOOTH # 524

